



KOMPLEX



MARKER DATABASE SOFTWARE

User manual





Contens

Contens	2
PC database software Marker locator	3
Software description	3
Software downloading	3
Software installation	3
Start.....	4
Manage users	5
Manage lines.....	5
Manage markers in one line	7
Receive data from locator SML	9
Send data to SML locator	10
Web Cloud database	11
Read data from Cloud database	11
Send data to Cloud database.....	12
Help	12



PC database software Marker locator

Dear user! Thank you for choosing our RFID tracing system. This manual help you to work correctly with our PC database software.

Software description



Database software Marker Database is used for managing of data about your underground pipelines and cables. It allows you to easily edit data about each marker. You can download your data from locator to PC or from PC to locator. By clicking on one button you can immediately see your pipeline or cable with all markers in the digital map.

Software downloading

Ensure that your PC is connected to internet.

Software is free of charge. It is available in www.komplex.sk in section "SUPPORT". You must register before you download the software. For registration and downloading of the software please follow the instruction on the web page written above in section SUPPORT/Marker database/Log in.

Software installation

1. After your downloading is completed find and open the zip file  locator.zip in your PC
2. Extract the zip file.
3. Run Installation by file  setup.exe
4. Complete the installation by following the installer instructions.
5. After successful installation the MarkerLocator icon must be in your Start menu (Fig.1).

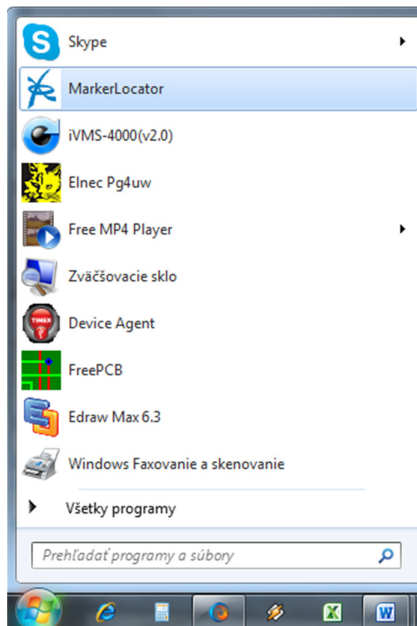


Fig.1 Start menu

Start

Run Marker Database software in your Start menu (Fig.1).

Ensure that your PC is connected to internet. Main window of the software you can see on Fig.2

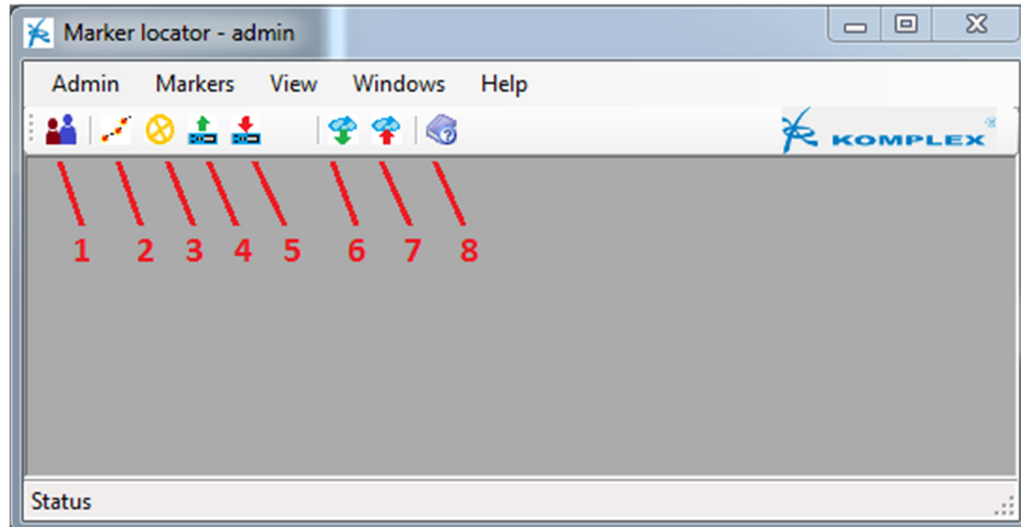
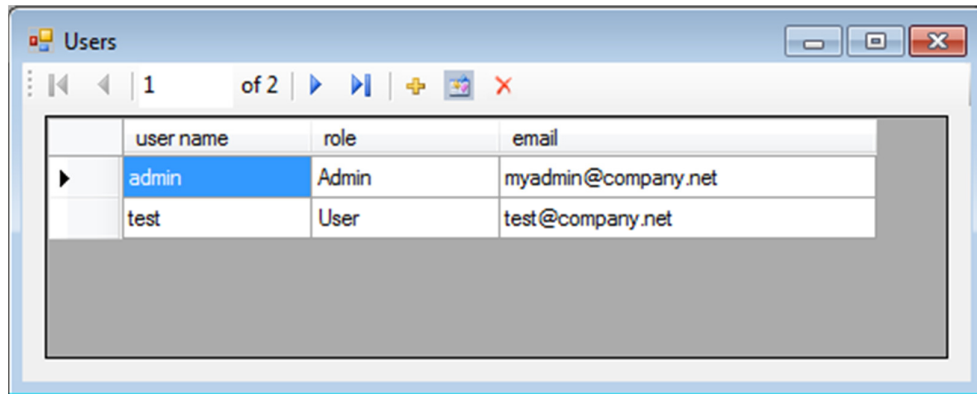


Fig.2 Main window of software

1. Manage users
2. Manage lines
3. Manage markers in one line
4. Receive data from locator SML
5. Send data to locator SML
6. Read data from web database
7. Send data to web database
8. Help

Manage users

This function is used to edit or remove users and to setup their attributes.



The screenshot shows a window titled 'Users' with a table containing two rows of user data. The first row is selected. The table has columns for 'user name', 'role', and 'email'. Navigation controls at the top indicate '1 of 2' records.

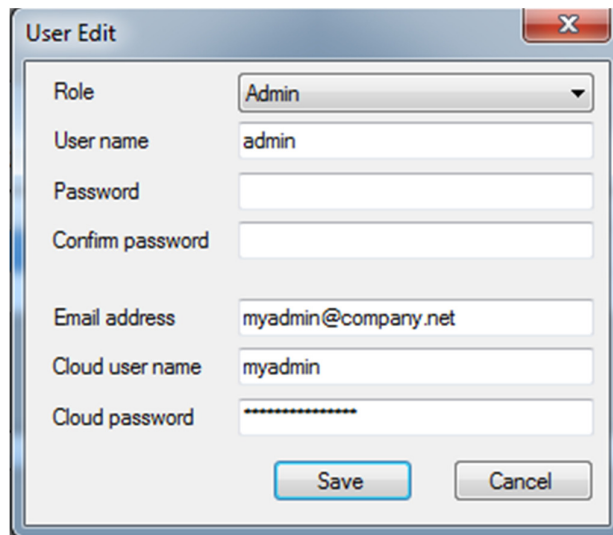
	user name	role	email
▶	admin	Admin	myadmin@company.net
	test	User	test@company.net

Fig.3 List of users

There are two roles for user: Admin and User. You can see their attributes bellow.

Users with "**admin**" role can edit the lines, users and markers,

Users with only "**user**" role can edit markers in allowed lines.



The 'User Edit' dialog box contains several input fields: a dropdown menu for 'Role' (set to 'Admin'), text boxes for 'User name' (admin), 'Password', 'Confirm password', 'Email address' (myadmin@company.net), 'Cloud user name' (myadmin), and 'Cloud password' (masked with asterisks). 'Save' and 'Cancel' buttons are at the bottom.

Fig.4 Edit form

Manage lines

This function is used to setup of all information about underground lines. Each line represents one underground pipeline or cable with markers.

	line name	line type	description	readers	editors	last modify	modified by
	aa	Telecommunication c...	aaaaaa			18. 7. 2012 20:36	Admin
	bb	Energy cables		user1;	user2;	18. 7. 2012 20:57	Admin
	ccc	water pipelines		user1,user2;	user1,user2;	18. 7. 2012 20:38	Admin
	ddd	Gas pipelines				18. 7. 2012 21:17	Admin
▶	ee	Oil pipelines				18. 7. 2012 21:18	Admin
	a1	TV cables				21. 7. 2012 16:33	Admin

Fig.5 List of the Lines

Window for setup parameters and information about line you can see on Fig.6a and Fig.6b

Line Edit

General Permissions

Line name: Line1

Line type: Telecommunication cables

description: my description for line 1

line admin: myadmin

material: copper

foundation depth: 2 m

pressure:

diameter:

cable type: Metallic twisted

cables count: 8

Save Cancel

Fig.6a Edit form - general line parameters

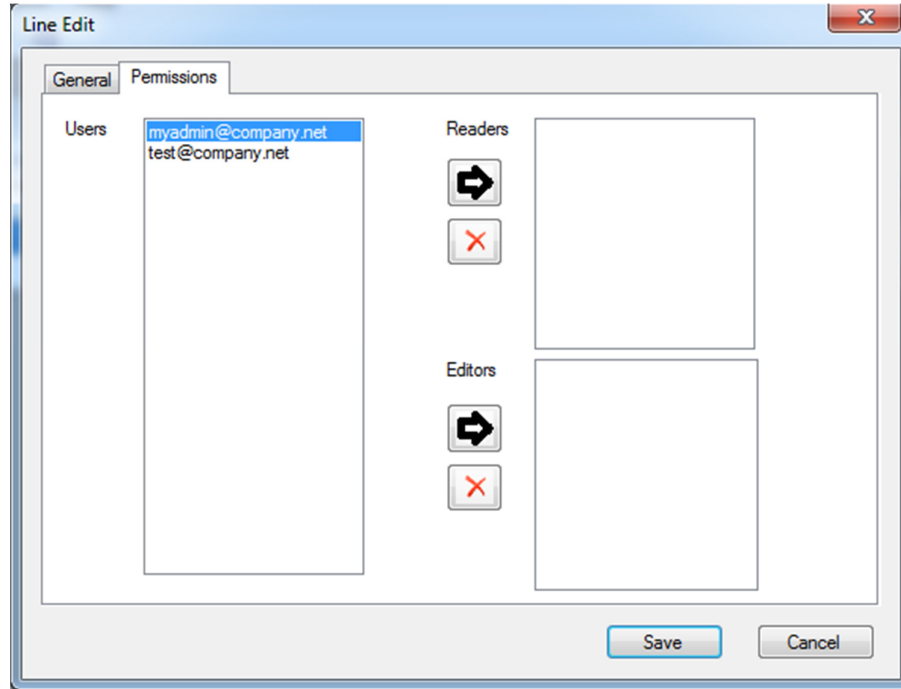



Fig.6b Edit form - permissions for the line

Manage markers in one line 

This function is used to edit all data of markers. After you push the button  or you choose Markers option in Markers Menu the window as shown on Fig.7 will open.

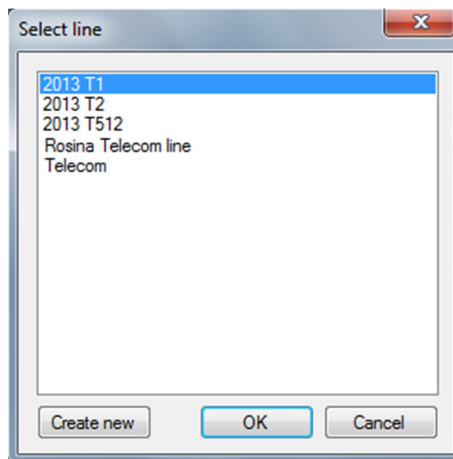


Fig.7 List of lines with markers



Use double click or OK to open target line or use "Create new" button in order to add new line.
Example of opened line database you can see on Fig.8 below.

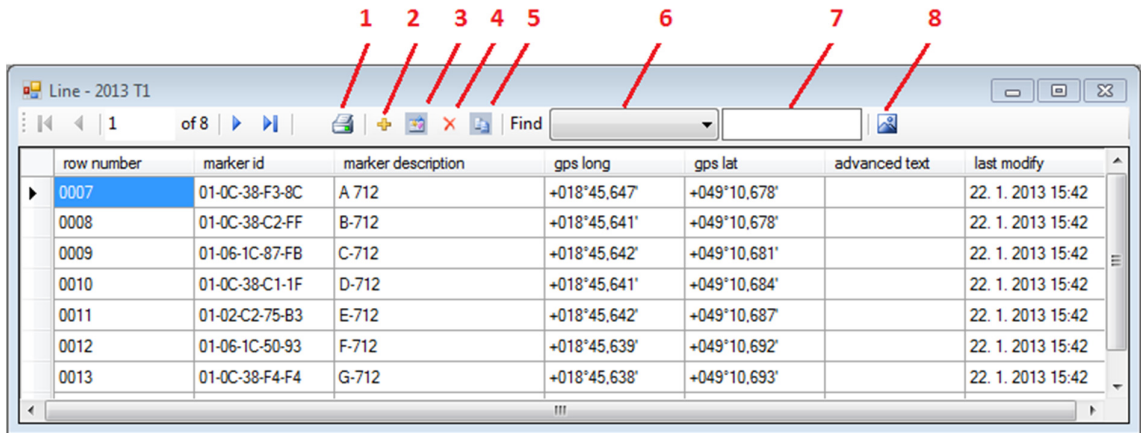


Fig.8 Example of line with markers

1. Print line
2. Add new marker
3. Edit selected marker
4. Delete selected marker
5. Copy selected marker to another line
6. Finding filter
7. Searched text
8. **Show line in map** (this function works only if your PC is connected to internet)

Fig.9 shows the window for editing of selected marker.

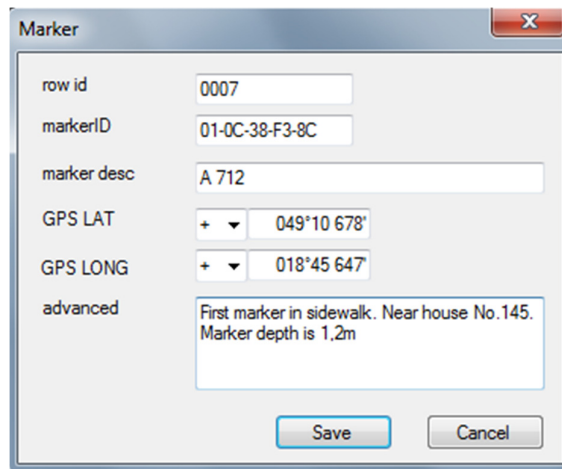


Fig.9 Edit of selected marker



Information: **Row id**, **Marker ID**, **Marker desc** and **GPS coordinates** are displayed also on the locator display. Information “**advanced**” is available only in PC database software.

Figure 10 shows line preview in Google map.




Fig.10 Line preview in Google map

Receive data from locator SML



This function is used to receive data from your locator. It allows you to comfortably and easy edit data about your underground line. **For correct working of this function please read also User manual of your locator.**

Way how to receive data from your locator you can see bellow:

1. Connect your locator with PC via USB cable
2. Wait until installation of driver in your PC is finished
3. Turn ON your locator
1. Go to **Main Menu/Flash Memory/Send data** on your locator and press Enter on locator front panel
4. Open window for Receive data from SML by button  in your PC software
5. Select the COM port (Usually is this port selected automatically)

6. Select the line name or type name of new line
7. Click on READ button
8. Select the "**Send data**" command on your SML locator device

Window for Receive data from SML is shown on Fig.11

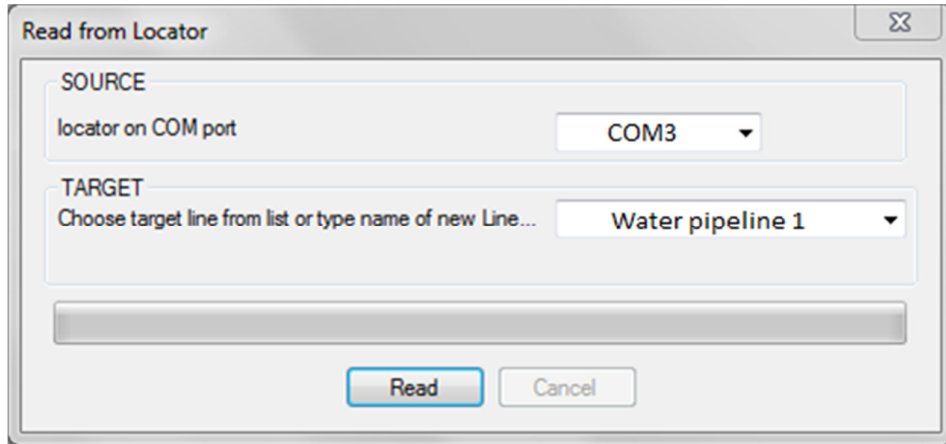



Fig.11 Window for Receive data from SML

Send data to SML locator



This function is used to send data from PC to your locator device. **For correct working of this function please read also User manual of your locator.**

Way how to send data from your PC to locator device you can see bellow:

2. Connect your locator with PC via USB cable
3. Wait until installation of driver in your PC is finished
4. Turn ON your locator
5. Open window for "Send data to SML" by button  in your PC software
6. Select the COM port (Usually is this port selected automatically)
7. Select the line which you want to send to locator
8. Go to **Main Menu/Flash Memory/Receive data** on your locator and press Enter on locator front panel
9. Click on **Send** button in PC software

Window of function Send data to SML is shown on Fig.12

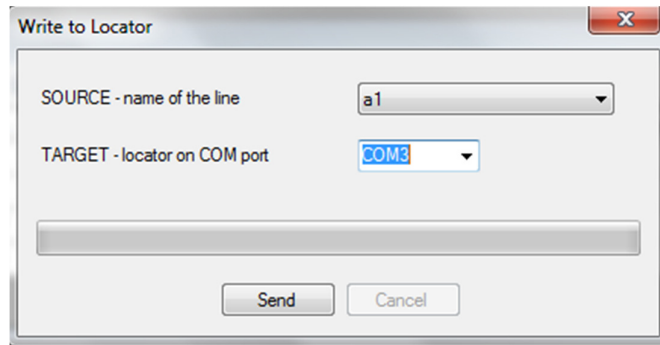



Fig.12 Window Send data to SML

Web Cloud database

It is possible to have data about your underground lines stored also in Cloud database. This is advantageous for users who want to share their data with other partners all over the world. Each Line stored in web Cloud database is protected by user name and user password against to an ineligible access. It is necessary to register on www.komplex.sk in section "SUPPORT/Marker database/Log in" before you start to use Cloud database.

Read data from Cloud database

This function is used to receive data from web Cloud database to your PC. This function works only if your PC is connected to internet. Way how to receive data from Cloud database is written bellow:

1. Press button **Read from Cloud database** 
2. Window as shown on Fig.13 will appear
3. Type name and password for access cloud database, this may be saved in menu Admin/Use
4. Click Get Lines for read Lines list from cloud database
5. Select your Line
6. Click to Download Line data

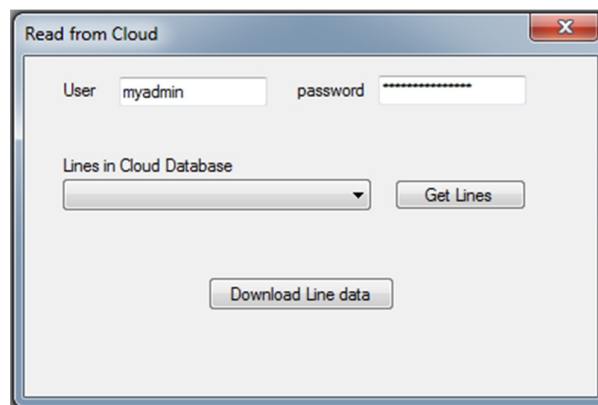



Fig.13 Window Read from Cloud

Send data to Cloud database

This function is used to share data about your underground lines with your other partners all over the world. This function works only if your PC is connected to internet. Way how to send data to Cloud database is described bellow:

1. Press button **Send to Cloud database** 
2. Type the user name and password, this can be saved in menu Admin/Users
3. Select the line from your PC
4. Click on Upload Line to Cloud database

Window of function Send to Cloud database is shown on Fig.14

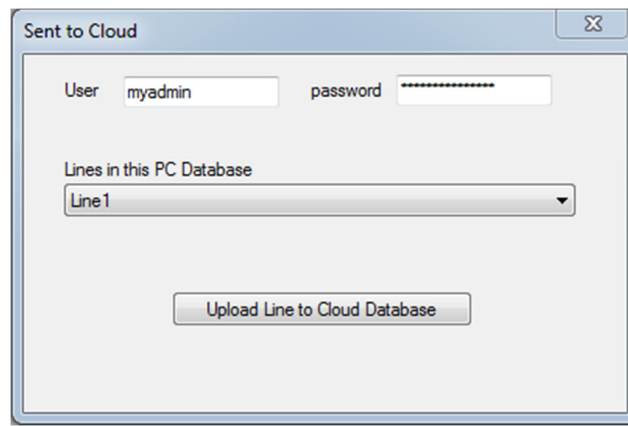


Fig.14 Window Send to Cloud database

Help

This function is used to open help file.

For any other question please free to contact our company. Contact information you can find at the bottom of this page.

Thank you.